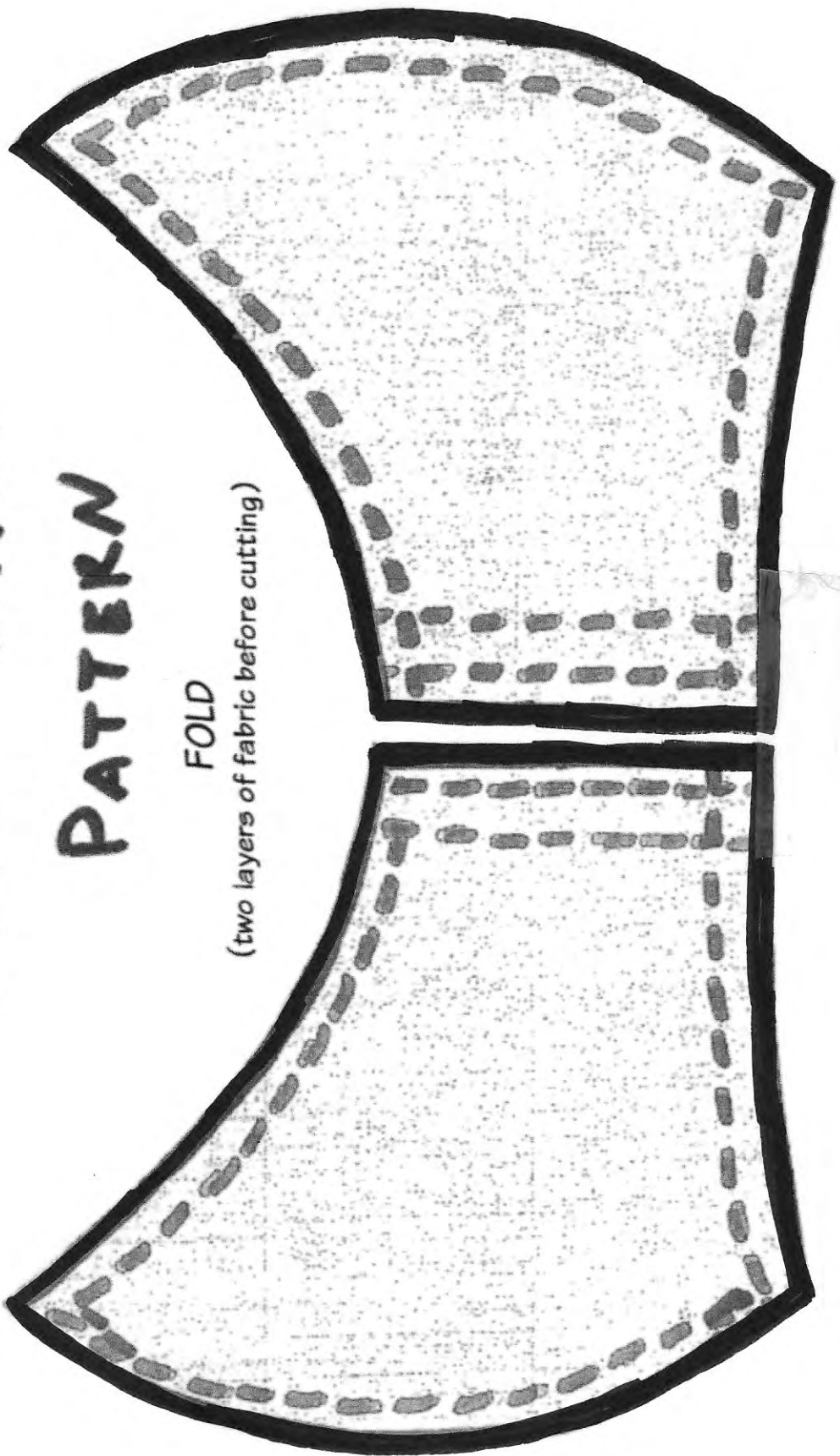


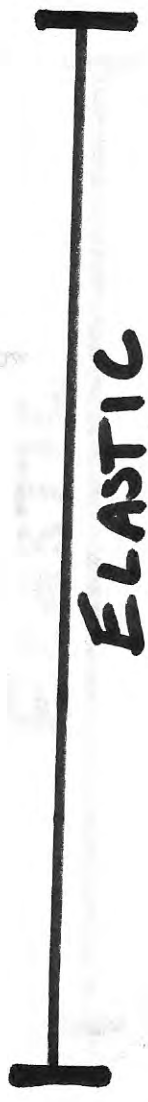
# CHILD MASK

# PATTERN

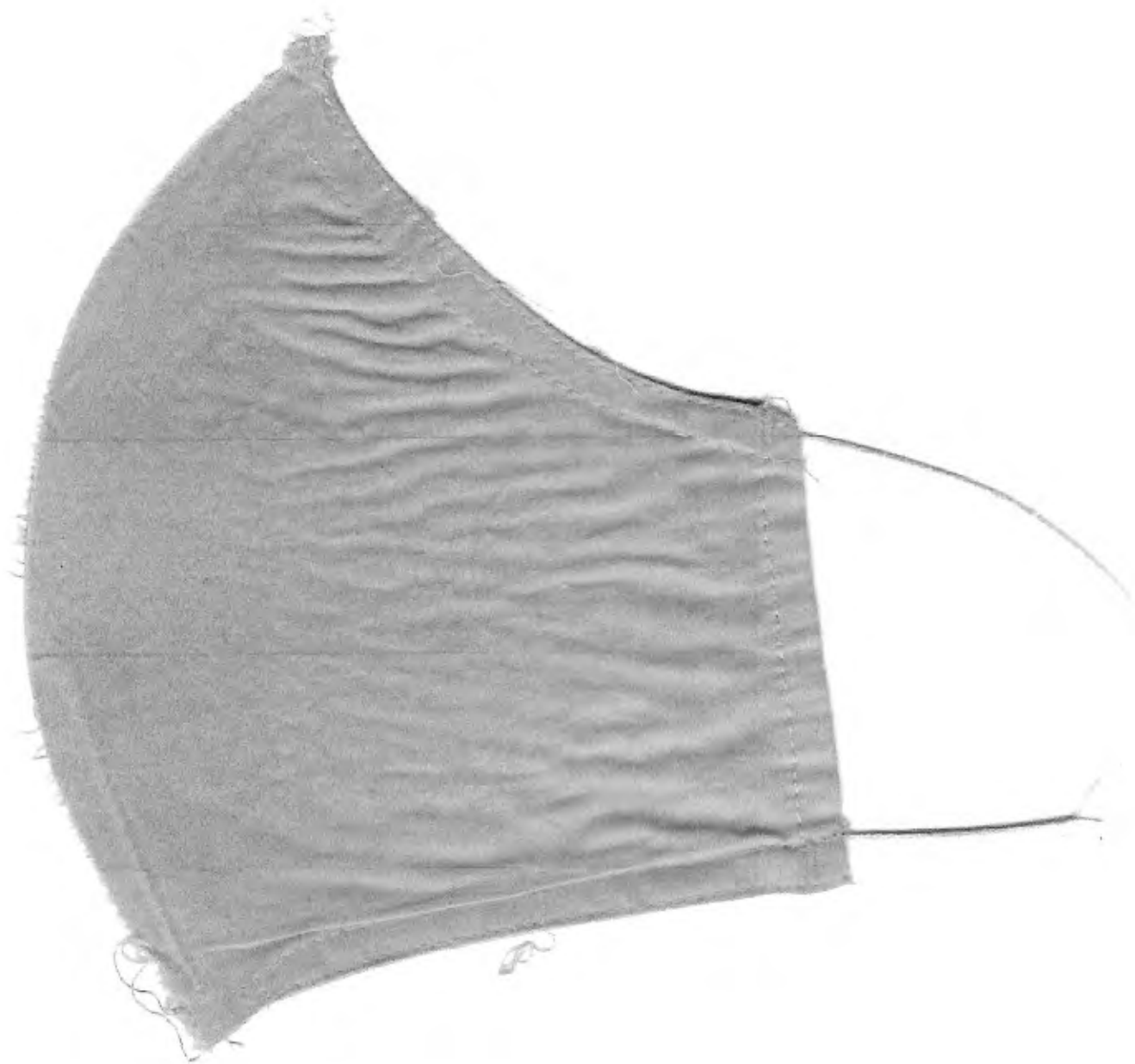


FOLD

(two layers of fabric before cutting)



ELASTIC  
5 1/2" x 2



# Face Mask Pattern

## Page 1

1. Print face mask pattern. Cut two pieces of elastic to match length on pattern.



2. Cut pattern along the outer edge.



3. Optional: tape two pieces of cut pattern in the middle for ease of tracing.



# Face Mask Pattern

## Page 2

4. Fold fabric right side facing in and iron. Optional: iron on a piece of interfacing on one side for extra filter protection.



5. Place pattern on fabric. Make sure the fabric pattern is right side up if necessary.



6. Trace pattern using a washable fabric marker. Mark center where you will cut pieces apart.



# Face Mask Pattern

## Page 3

7. You will now have four pieces of fabric.



8. Fold right side in 1/4" and iron on three sides. Do not iron the longest side.



# Face Mask Pattern

## Page 4

9. Sew the small side hem down



10. Pin two matching sides together right sides out. Pin edges of elastic on the inside. Sew ONLY the outside edges together. DO NOT sew the small side between the elastic so you can turn it inside out.



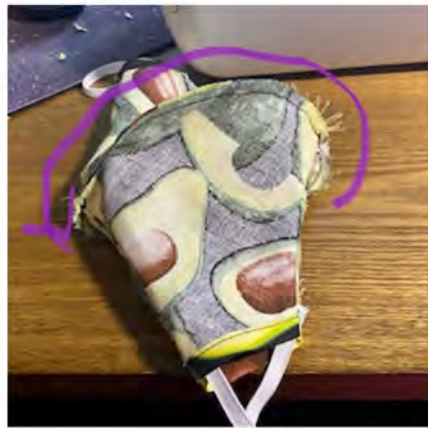
# Face Mask Pattern

## Page 5

11. Turn the mask inside out and pin the large sides together.



12. Sew all the way around the pinned sides.



13. Turn mask right side out through small sides. Sew all the way around the outer edge of the mask.



# Face Mask Pattern

## Page 6

14. Try on mask and evaluate fit.



15. Optional: fold darts on small sides to improve the fit around your face.



16. Optional: sew darts down.

